

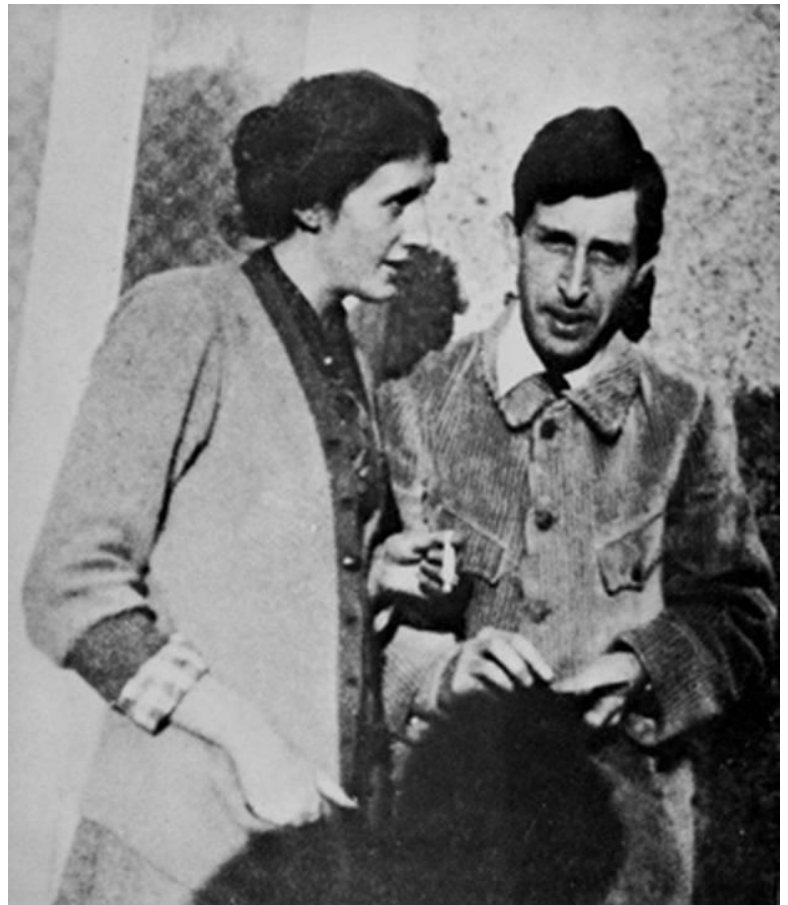
JUST THIS SIDE OF MADNESS

Creativity and the Drive to Create

Carol Ann Beeman, M.A. in Art
Therapy, Ed.D.

207 pages, ISBN 0-9615143-9-6 **\$24.95**
UCA Press, 1990, Second Edition

***Just This Side of Madness* is a unique study of creativity and the creative drive. Using the life and works of Virginia Woolf as a case in point, the book demonstrates by carefully documented and up-dated psychiatric research the probable genetic link between the motivational factor in creative functioning and a complex of inheritable bipolar and other affective disorders (alcoholism, manic-depression, obsessions, phobias, and suicidal tendencies). The book raises our general level of consciousness about who the artist is, what he or she can and should do to enhance artistic functioning, and what can be done to assist artists and other generative thinkers to enhance creativity while, at the same time, preventing pathology.**



Dr. Beeman has over 45 years' experience in education, art, and public service as a classroom teacher, Administrator, Specialist with LD/ED children and adults, mental health and crisis-intervention specialist, Artist/art therapist, poet and writer. Carol Ann Beeman was awarded the Ed.D. by the University of Arkansas at Little Rock. Her dissertation research was a reliability and validation study of the use of an art therapy assessment as a screening tool for early detection of learning problems in grades K-2. The title of the research was *Using an Art Therapy Assessment to Screen for Barriers to Learning in the Primary Grades*. Two Catholic schools and a public school served as research sites in the study. She was awarded an M.A. in Art Therapy from George Washington University, Washington, D.C. in 1994; has been an Arkansas Teacher (Certified, 1987-2009; Louisiana, 1966-72; Alabama, 1968-70). She served as Principal of a K-6th parochial school: 2007-2012. A Professional Member of the American Art Therapy Association since 1994, Dr. Beeman continues to use art therapy as an assessment and intervention method for students with learning or emotional difficulties that hamper school achievement. Her dream is to bring the **Arts & Motion** © program (an arts-integrated learning method) to support students around the country, especially disadvantaged children from low-income families that have problems accessing services. As an extension of this dream, the St. Therese Missionary Society is planning a facility and a pilot school in Marshall, Arkansas to provide a range of intervention services through arts integration programs.

Go to <http://sttheresemissionarysociety.org/> to learn more about the

Little Way Learning Academy and Professional Development Center.

BOOK ORDER FORM

COPIES _____

NAME: _____

ADDRESS: _____

PHONE: _____

EMAIL: _____

\$25.00 EACH _____

+ SHIPPING _____ **U.S. (6.00 EACH BOOK)**

TOTAL _____